

PILOT
POWER

AB-10
AB-12
AB-15
AB-10 Pro
AB-12 Pro
AB-15 Pro
AIR BRUSH



PILOT POWER
SPRAY GUNS

Service Sheet &
List of Spare Parts

Dear Customer,

Thank you for purchasing
PILOT Power AIRBRUSH.

Every PILOT product
guarantees years of
customer satisfaction.
PILOT Power equipments
are unique and are
designed for easy use with
simple mechanism.

PILOT Power AIRBRUSHES
are manufactured using
components, which have a
very good ratio of weight
and strength. Its critically
engineered air cap, nozzle
and needle achieve a fine
uniform spray.

It is widely used by artists
for fine art work, photo
retouching etc.

It is also used for
eliminating unwanted
details, decorating tags,
painting paper cards etc. Its
simplistic operation (by
pressing the push button)
makes it user-friendly for
professionals as well as
amateurs.

How to use

It is important to eliminate dust accumulated
in the hose. You can easily do it by connecting the
hose to the air receiver at a working pressure of
(1.5 to 4 kgs / cm²).

Hold the airbrush in a similar manner as the pen.
Pour the required quantity of prepared colour into
the cup and slightly depress the push button,
which will activate the air flow. Retraction of the
push button will start the flow of colour. The
movement of the hand (with the push button
depressed & retracted) should be continuous till the
flow of colour spreads in order to avoid surplus
colour deposition at the end of each stroke.

For best results

We recommend the use of liquids of appropriate
viscosity that's finely ground resulting in a free
flow. Liquids containing loose particles should be
used only after straining the mixture through a fine
filter. This will avoid clogging of the nozzle.

Do not allow any liquid build-up on the air cap.
Also take care of the needle point and prevent it
from bending or damage. It is important that
liquids are mixed in correct ratio of water or mixing
medium to achieve proper viscosity.

Technical Specifications

Code no.	AB-10/10P	AB-12/12P	AB-15/15P
Cup capacity approx (ml)	5	10	15
Max. Pattern width (mm)/ Gun distance from work piece mm (inch)	20/50(2)	20/50(2)	20/50(2)
Fluid nozzle orifice dia(mm)	0.3	0.3	0.3
Min required pressure (Kg/sq.cm)	1.5	1.5	1.5
Air consumption of rated pressure lit/min (c.f.m)	5(0.17)	5(0.17)	5(0.17)
Material output (cc/min)	2	2	2
Min. Air - compressor (HP)	1/8*	1/8*	1/8*
Weight of gun (gms)	105/103	118/123	135/136

Sr. No.	Description	Code No.	Sr. No.	Description	Code No.
	Air Brush AB - 10 PRO with 5ml cup	AB 10000P	20	"O" Ring For Body	AB 10017A
	Air Brush AB - 12 PRO with 10ml cup	AB 12000P	21	Body	AB 10017B
	Air Brush AB - 15 PRO with 15ml cup	AB 15000P	22	"O" Ring For Valve Pin	AB 10017C
	Air Brush AB-10 with 5ml cup	AB 10000	23	Valve Pin	AB 10017D
	Air Brush AB-12 with 10ml cup	AB 12000	24	Spring For Valve Pin	AB 10017E
	Air Brush AB-15 with 15ml cup	AB 15000	25	Valve Pin Locking Nut	AB 10017F
1	Needle Valve Cover	AB 10001	26	Hose Joint Complete	AB 10018
2	Air Cap	AB 10002	27	"O" Ring For Hose Joint	AB 10018A
3	"O" Ring For Air Cap	AB 10003	28	Hose Joint	AB 10018B
4	Fluid Nozzle	AB 10004	29	Hose Nut	AB 10018C
5	"O" Ring For Fluid Nozzle	AB 10005	30	Cup Cover (Small)	AB 10019
6	Packing Bush	AB 10007	31	Cup Cover (Medium)	AB 12019
7	Needle Packing Screw	AB 10008	32	Cup Cover (Big)	AB 15019
8	Plunger With Push Button Guide	AB 10009	33	***"O" Ring For Housing	AB 10020
9	Needle Spring	AB 10010	34	**Housing	AB 10021
10	Plunger Cap	AB 10011	35	***"O" Ring For	
11	Needle Valve	AB 10012		Air Control Knob	AB 10022
12	Needle Socket	AB 10013	36	**Air Control Knob	AB 10023
13	Back Cover Complete	AB 10014	37	Spanner	AB 10024
14	Back Cover	AB 10014A	38	*Repair Kit	AB 10080
15	"O" Ring For Needle Adj. Screw	AB 10014B		# Accessories	
16	Needle Adj. Screw	AB 10014C		* This Set Contains A Fluid Nozzle & Needle Valve.	
17	Push Button Complete	AB 10015		** Only For Pro Series	
18	"O" Ring For Piston	AB 10016			
19	Body Complete	AB 10017			

Disassembly of the Airbrush

In each of these steps please refer to the diagram. Remove each part by turning or pulling in the direction indicated by the arrows.

Step 1. Pull air hose off the hose connector.

Step 2. Remove back cover complete(12)

Step 3. Loosen needle socket (11).

Step 4. Pull needle valve (10) out. Be careful not to damage the tip.

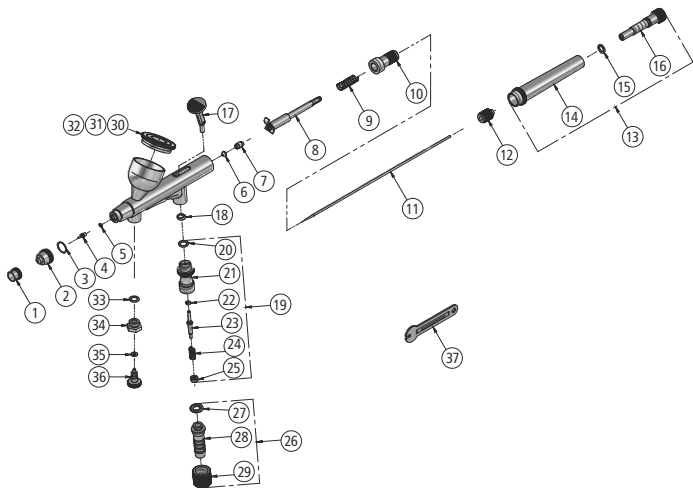
Step 5. Unscrew plunger cap (9).

Step 6. Remove needle spring (8) and plunger with push button guide (7) respectively.

Step 7. Remove push button (16) by pulling up.

Step 8. Remove needle valve cover (1) and air cap (2) respectively.

Step 9. Using the small flat spanner received with the airbrush, remove fluid nozzle (3). Note: the nozzle has two flat spots. Place the slot of the spanner over these slots and turn counter clockwise.



Cleaning & Lubrication

Submerge all parts of the airbrush except the needle in a solvent in a glass or metal pan for a few minutes. Then scrub the parts with a small soft paint brush until all liquid has been removed. Clean the cup thoroughly. Make sure there is a good liquid flow from where the nozzle connects. Use a q-tip to scrub the walls and to reach into the cup. Rinse the parts with hot water and dry thoroughly with a lint-free cloth. Clean the needle and check the point to make sure there is no damage. Look at the tip of the needle for a bend or hook. Using a white piece of paper and placing the needle on it and rolling it will make it easier to see if there is damage and needs to be replaced.

Assembly

- Step 1. Using the nozzle wrench, screw in, and then tighten the fluid nozzle (3).
Caution: Do not apply excessive force when tightening the nozzle.
- Step 2. Screw the air cap (2) and hand tighten
- Step 3. Screw the needle valve cover (1) on the air cup (2)
- Step 4. Inspect the push button (16) notice there is a thinner line section on the flat part under the round head. This side goes towards the front. Now insert this part into opening vertically down as per shown in fig in the top horizontal slot.
- Step 5. Insert plunger with push button guide (7) as per shown in fig. and then slide needle spring (8) and plunger cap (9) respectively screw in and tighten. This spring mechanism will push the main lever and auxiliary lever forward.
- Step 6. Insert needle valve (10) through plunger with push button guide (7) and slowly push all the way forward. screw on the needle socket (11) and tighten securely.
- Step 7. Cover the back of air brush with back cover complete (12)

Periodic Airbrush Maintenance

On the inside page you will find the diagrammatic representation of the airbrush with instructions for airbrush maintenance. Please study the diagram for parts recognition and to understand how to disassemble and assemble the airbrush.

For Long Lasting Use

- Do not allow remaining liquid to dry up in the cup.
- Wash the cup & the nozzle immediately with cleaning solvent after use by spraying.
- Never use a sharp object for cleaning, instead use a soft brush.
- Always handle the nozzle and the needle with utmost care, for if tampered with or damaged will not produce the desired results.

Manufactured by:

Manik Radiators Pvt. Ltd.

35, Balaji Industrial Estate, Hanuman Nagar, Akurli Village, Kandivali (East),
Mumbai - 400 101 MH. INDIA Tel.: +91 22 660 47 000
www.pilotindia.com

Company reserves the right to change the design & specifications of the guns featured herein without prior notice.