

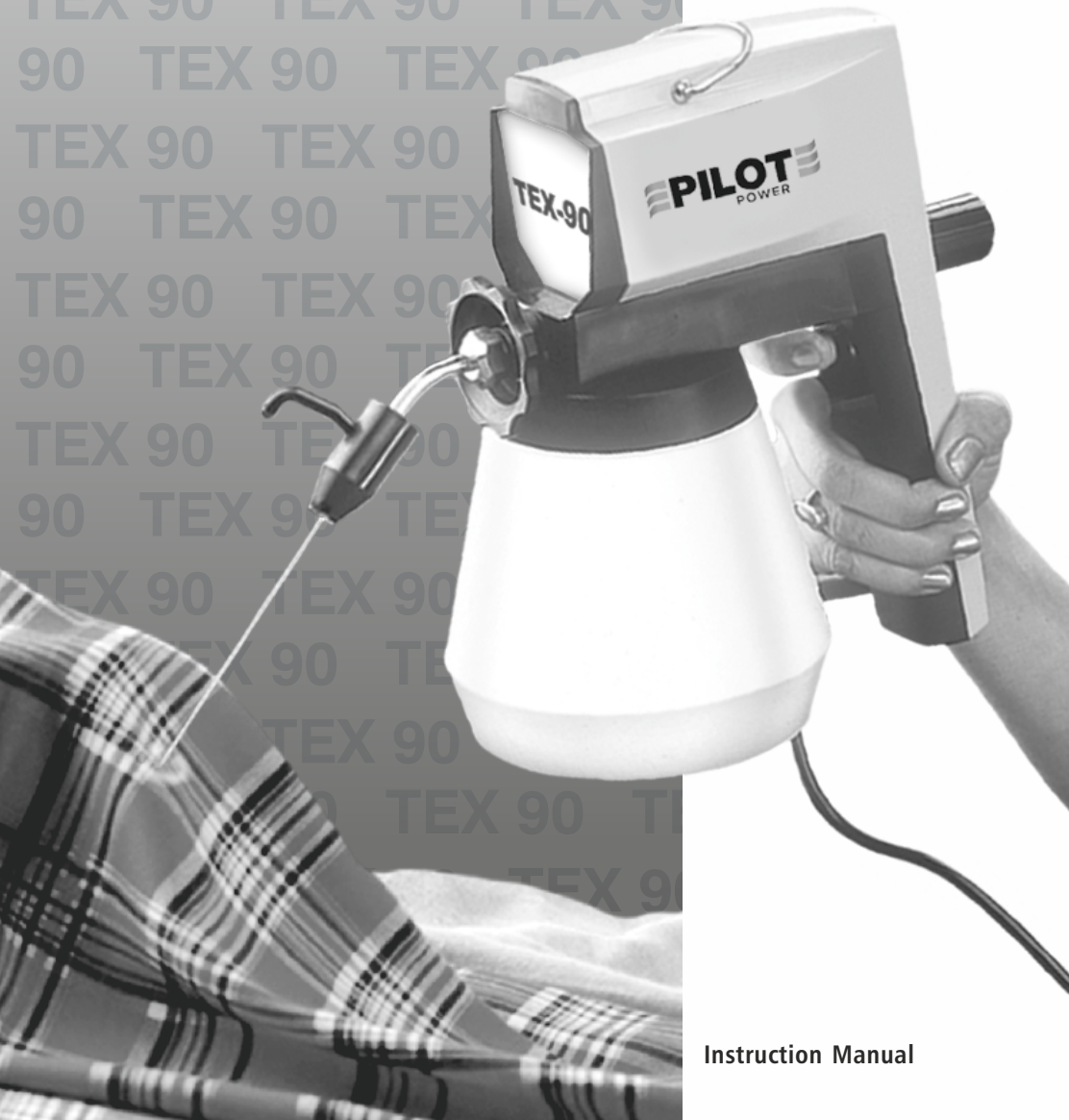


Conformity to
European Standards

PILOTE
POWER

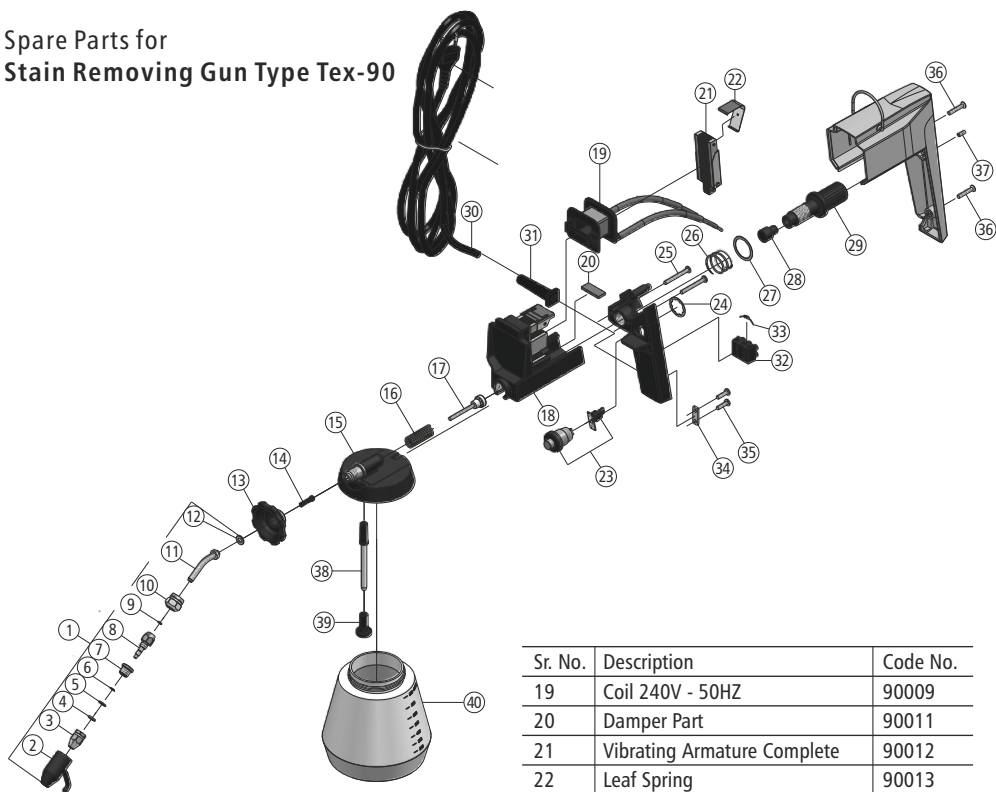
TEX-90

Stain Removing Gun



Instruction Manual

Spare Parts for Stain Removing Gun Type Tex-90



| Sr. No. | Description | Code No. |
|---------|------------------------------|----------|
| | Stain Removing Gun TEX 90 | 90000 |
| 1 | Nozzle Complete | 90001 |
| 2 | Nozzle Sleeve Complete | 90001A |
| 3 | Splined Nozzle Head Complete | 90001B |
| 4 | Teflon Washer | 90001C |
| 5 | Washer Dia 9.8 | 90001D |
| 6 | Circlip | 90001E |
| 7 | Thread Holder | 90001F |
| 8 | Swirl Head | 90001G |
| 9 | Washer Dia 5.3 | 90001H |
| 10 | Nut | 90001I |
| 11 | Tube Complete | 90001J |
| 12 | Nylon Washer | 90001K |
| 13 | Locking Screw | 90002 |
| 14 | Swirl Valve | 90003 |
| 15 | Pump Housing Complete | 90004 |
| 16 | Piston Spring | 90005 |
| 17 | Piston Complete | 90006 |
| 18 | Drive Housing Complete | 90007 |

| Sr. No. | Description | Code No. |
|---------|-----------------------------|----------|
| 19 | Coil 240V - 50HZ | 90009 |
| 20 | Damper Part | 90011 |
| 21 | Vibrating Armature Complete | 90012 |
| 22 | Leaf Spring | 90013 |
| 23 | Switch With Circuit | 90015 |
| 24 | Switch Ring | 90017 |
| 25 | Handle Screw | 90018 |
| 26 | Control Knob Spring | 90019 |
| 27 | S.S Washer | 90020 |
| 28 | Buffer | 90021 |
| 29 | Regulating Screw | 90022 |
| 30 | Cable With Plug | 90023 |
| 31 | Grommett | 90024 |
| 32 | Terminal Block | 90025 |
| 33 | Diode | 90026 |
| 34 | Cable Anchorage | 90027 |
| 35 | Anchorage Screw | 90028 |
| 36 | Cover Screw | 90030 |
| 37 | Threaded Stud | 90031 |
| 38 | Suction Tube Complete | 90032 |
| 39 | Filter Complete | 90033 |
| 40 | Container Complete | 90034 |
| 41 | Repair Kit | 90080 |

Accessories

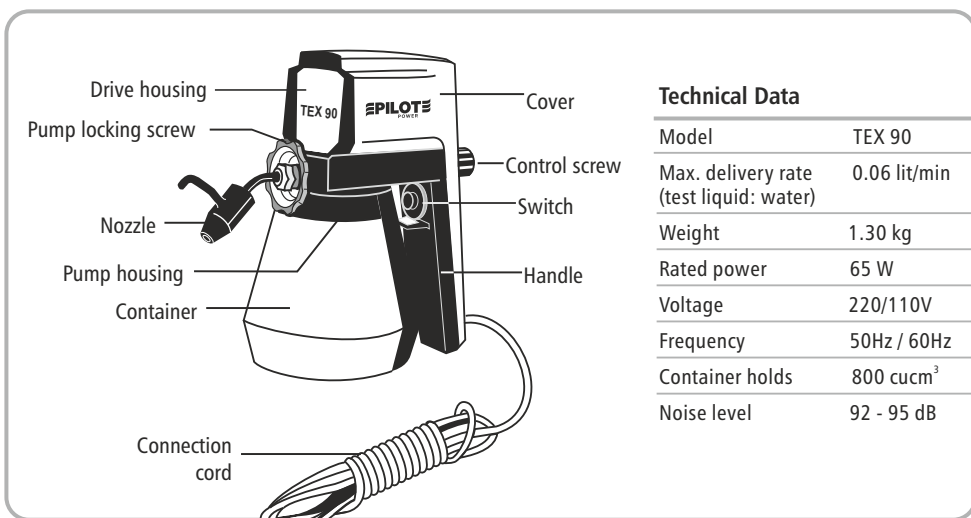
* This Set Contents A Valve Complete, Pump Housing Complete, Piston Spring & Piston Complete

Introduction

Pilot Power Stain Removing Gun is an indispensable aid to the textile and garment industries. To get the maximum benefit from this appliance it must be looked after. This manual is designed to help you to keep the machine in good working condition.

Do's and don'ts

1. Don't operate the gun without liquid.
2. The high-pressure produced from the spray gun might lead to injuries. Therefore do not point gun at yourself or in the direction of other people.
3. Do not spray abrasive solutions.
4. Use filtered solutions to avoid cloggy of nozzle.



Connection to supply

The appliance can be operated from single - phase AC supply only. Before starting up, check that mains voltages agrees with operating voltage marked on gun rating plate.

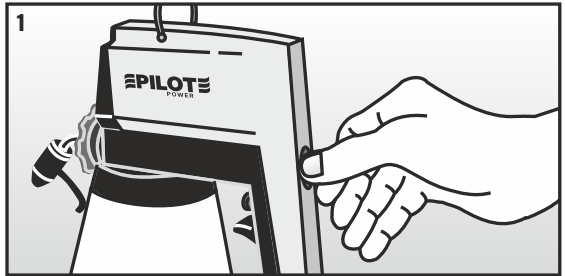
Information on spraying materials

1. The spraying of abrasive materials, is not covered by our Guarantee.
2. Moderately corrosive liquids (stain removers, insecticides, water aqueous solutions) can readily be sprayed from the Pilot Electric Spray guns.

Instructions for Removing Stains

Preparation

- Do not operate the spray gun without fluid. • Fill fluid into cup of the spray gun and start the gun by pressing switch.
- Make sure that seen from the rear the adjusting screw (Photo 1) is turned counterclockwise. This yields the highest pressure. Turn screw to the right if you desire less fluid or less jet pressure. • By turning lever on variable nozzle you can adjust infinitely any given type of jet. For an extremely hard, sharp jet the lever points upward; for a misty, very soft jet it points downward.



Removal of Stains

With Stain Removing Gun the dirt is flushed or shot through the material. The back of the fabric to be cleaned must, therefore be free, or it must consist of an absorbant support. With every new fabric make a cleaning test in an area where no visible damage can be done. Perform work quickly. Change over promptly from sharp to soft jet. The quicker the work is done and the less fluid used, the less is also the danger of forming rings. With sensitive fabrics dry immediately after mist treatment by shaking cleaned fabric up and down. If dirt residues are stilt visible after drying repeat entire cleaning procedure. It is better to clean twice quickly with little fluid than to clean once slowly with a lot of fluid.



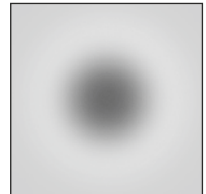
Nozzle handle upwards
Flushing with sharp jet



Appearance of fabric after
flushing with sharp jet



Nozzle handle downwards
Mist treatment with soft jet



Appearance after mist
treatment with soft jet

Operating Instructions for TEX-90

These Operating and Maintenance Instructions are for your information but are not binding. The differing characteristics of the various types of woven and knitted materials may make it necessary, in individual cases, to carry out a test on a remnant or on a hidden part of an article of clothing.

Correct Use of the Nozzle

- Select type and force of jet using the lever on the Nozzle. The pressure of the jet should be set to match the resistance to displacement of the soiled woven/knitted fabrics. The stain remover should never be brought so close to the material, that the fabric is damaged or displaced.
- The stain remover has to be directed smoothly and with accuracy, to avoid unnecessary wetting of the fabric. For large soiled areas it must be guided in a circular motion such that the pressure jet rinses the substance from the outside to the inside.
- After the stain has been treated the Nozzle is set to produce a soft, fine mist spray This is to avoid the formation of ring marks. Using this mist spray a circular and uniform transition from the damp to the dry part of the fabric is produced. The damp patch should appear without contours - that is, without a visible transition. Rapid working will avoid ring marks becoming fixed in the material.

• After completing treatment the damp back-up layer is to be removed. If the work is being carried out on an ironing board or exhaust table the damp fabric is to be removed from the wet patch and transferred to the dry part of the working surface. This avoids the transfer of dissolved staining substances back into the treated material. | If you have to dismantle the Nozzle for any reason, e.g., if the nozzle head is clogged, then refer to the operating instructions. Below is an exploded view of the individual part. Do not use excessive force.

| Key | Description | Nozzle Assembly |
|------|---------------------|-----------------|
| 1.1 | Nozzle complete | |
| 1.2 | Setscrew | |
| 1.3 | Nozzle sleeve | |
| 1.4 | Splined nozzle head | |
| 1.5 | Teflon washer | |
| 1.6 | Brass washer | |
| 1.7 | Circlip | |
| 1.8 | Thread holder | |
| 1.9 | Swirl head | |
| 1.10 | Brass washer | |
| 1.11 | Nut | |
| 1.12 | Tube | |
| 1.13 | Nylon washer | |

Dismantling the Nozzle

1. Remove the setscrew 1.2
2. Pull off the nozzle sleeve 1.3
3. Push the fitting spanner onto the spindle nozzle head 1.4
4. Hold the threaded holder 1.8 by means of a spanner and unscrew the nozzle head.
5. Clean nozzle head and swirl head 1.9.

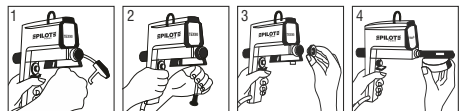
Assembling the Nozzle

1. Rotate the threaded holder 1.8 as far as possible against the circlip 1.7
2. Ensure that the teflon washer 1.5 and the brass washer 1.6 are placed in the correct order on the swirl head or in the nozzle head.
3. Screw the nozzle head onto the threaded holder and tighten by rotating both spanners against each other.
4. Using the fitting spanner rotate the nozzle head back (to the right) until the Nozzle is in the fine spray position.
5. Push the nozzle sleeve onto nozzle head to the position which is most convenient for working.
6. Tighten setscrew.

Removing & Replacing the pump

Proceed in the sequence shown in the illustrations

- 1) Loosen the nozzle, takeoff valve, unscrew the container.
- 2) Take off the suction tube. 3) Loosen the locking screw.
- 4) Remove the complete pump. 5) Replace the pump. 6) Firmly tighten the locking screw. 7) Insert suction tube, replace container. 8) Insert valve secure the nozzle.



Tips for Better Results

- Woven and knitted fabrics, which due to their nature & finish are particularly susceptible to formation of ring marks, must be treated by application of a trace of fluid from the fine mist spray, before the actual treatment begins.
- For very sensitive fabrics, & also for removal of ring marks (caused by incorrect finish with fine mist spray or drying), treatment is carried out only with the soft, fine mist spray For the actual rinsing out process the fine mist spray is brought as close to the fabric as possible, without causing it to be damaged (thread displacement), immediately afterwards a uniform transition from the dry to the wet fabric is produced by making circular movements at a greater clearance from the fabric.
- Repeat this process once or twice. Never allow too much fluid to penetrate the fabric. Always work very quickly. Dry and if necessary, repeat process.

- With certain types of stain, which occur less frequently, it is necessary, in spite of the increased danger of formation of ring marks, to wet the stain before treatment with a few drops of methylated spirit. Together with dissolved staining substance can be removed by spraying with fluid from TEX-90.
- This treatment can be recommended for the following types of stains: Special oils based on molybdenum sulphide, tallow, wax, ballpoint pen ink, make-up, stamp pad ink and also in some cases stains caused by fruit juices.
- If spraying through the material is not possible, then cleaning is carried out by spraying tangentially across the surface. In this case always work with a soft, fine mist spray.
- All types of yarn packages and especially con bobbins can be successfully cleaned in this way, even if the soiled area is in the bulge or dent. Should it be necessary to clean carpets, structured fabrics, mohair, velour or any napped fabric, the soiled material can be laid over a round cushion or over the arm of the operator. In this way the stain is rinsed tangentially out of the material.
- Sedimentary stains, which have formed a crust on one side of fabric, should be cleaned from the back.
- The removal of continuous and needle-shaped stains from plain fabrics is easy, economical and therefore to be recommended.
- Stains caused by specialized technical oils or greases, or those which have worked into the fabric over a lengthy period, should first of all be treated by applying a trace of fluid using the fine mist spray, in order to somewhat soften the staining substance. Do not make thoroughly wet: spray only a very thin layer.
- Where possible, crusts should, first of all, be scraped off with the dull edge of a knife blade. The spray jet should if possible be kept at a right-angle to the material, in order to reduce danger of thread displacement.
- Spraying of thick fabrics, treated with moisture-repellant, should be carried out when they are lying flat, and stretched, if possible. If they are freely supported, fluid can escape downwards too quickly.
- Production machines (ring travelers, shuttle-boxes, loom reeds, needle beds, sewing machines, and machines and motors in general) can be treated and kept clean using this process.
- Moth repellent and impregnating agent can also be sprayed. However, these fluids are nearly always very corrosive, and for this reason the stain remover must be cleaned immediately after use.
- It is advised that a separate container is used for each type of fluid.

Terms & conditions of Warranty

Dear Customer,

It is in your own interest to ensure that the enclosed Warranty Card is filled in & stamped by the dealer at the time of purchase. For warranty conditions, please refer below.

Yours faithfully,

Ishwar S. Manik

Managing Director

We guarantee this appliance on the following terms:

We will carry out free repairs or replacement of all parts that are found to be defective owing to design or manufacturing flaws. This warranty does not extend to damage caused by improper assembly or usage, normal wear & tear, negligent handling or servicing, or damage owing to chemicals, electrochemicals, electric agents and particularly abrasive or corrosive materials not recommended by us.

For the warranty to be valid, the card has to be stamped by the dealer as per provision, with the date of purchase and his signature. Also, the appliance has to be returned with the completed warranty card.

We reserve the right to entrust compliance with the warranty to our approved sub-contractor / dealer. If inspection reveals that the damage is not covered by this warranty, repairs will be carried out at the expense of the purchaser.

Manufactured by:

Manik Radiators Pvt. Ltd.

Shed No.3, Plot No. 126/1 2B, Village Horale, Khopoli Pen Road, Khalapur, Raigad 410203, Maharashtra, INDIA
Tel.: +91 22 660 47 000 • E-mail: info@pilotindia.com • www.pilotindia.com