



E88

**ELECTRIC  
SPRAY GUN**

INSTRUCTION MANUAL

# E88

**VARIOUS  
APPLICATIONS**



SPRAYING PAINTS

SPRAYING INSECTICIDES



HOUSEKEEPING PEST CONTROL



# Introduction

---

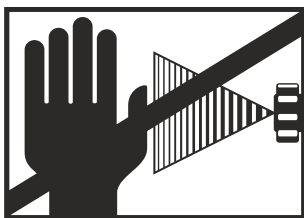
Pilot Power Electric Spray Guns are innovatively designed to finely atomize all sprayable materials. A high speed piston pump in the Pilot Power Electric Spray Gun draws up the fluid and atomizes it solely by hydrostatic pressure. After passing through a swirl-and-nozzle system the fluid is then finely atomized and delivered onto the surface to be sprayed in the form of a cone.

This advanced method of spraying without a compressor has been widely accepted all over the world - with good reason. It is easier. More economical. Neater ... and quicker.



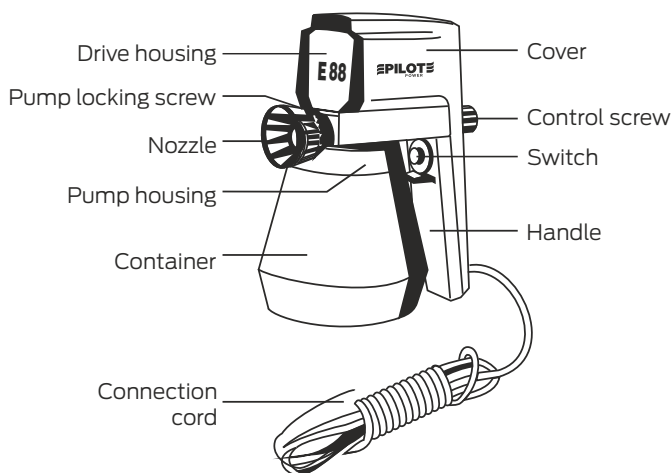
## Do's and don't's

1. Spray vertical surfaces with a thin coat and then apply a second coat to prevent paint runs.
2. Spray away from you on horizontal surfaces so that the paint contacts the surface at an angle of about 45 degrees. Any overspray will then be covered up by the next stroke.
3. Do not apply too thick a coat in one pass or the paint may run. For best results, spray a thin coat first and allow it to dry, then apply a second coat.
4. Mask off parts which are not to be sprayed with cardboard, masking tape, paper etc. Window frames can be effectively shielded with damp newspaper.
5. Ensure that paint is properly thinned.
6. The high-pressure produced from the spray gun might lead to injuries. Therefore do not point gun at yourself or in the direction of other people.



## Technical Data

Model	E 88
Max. delivery rate (test liquid: water)	0.26 Lts /min
Rated power	65 W
Voltage	220/230V
Frequency	50Hz
Pressure max.	150 bar (2,175 psi)
Container holds	800 cm <sup>3</sup>
Weight	1.43 kg
Noise Level	90/95 db



## Connection to supply

The appliance can be operated from single - phase AC supply only. Before starting up, check that mains voltages agrees with operating voltage marked on gun rating plate.

## Information on spraying materials

1. The spraying of abrasive materials (lime, coarsely ground whitewash, cement solution dispersions, red lead, glazes, abrasive solutions, sand blastings, latex paints) **is not covered by our Guarantee.**
2. Emulsion and latex paints are produced and sold in different grades. Ask for high grade pigmented emulsions or latex paints of AIRLESS-quality.
3. Moderately corrosive liquids (stain removers, insecticides, water aqueous solutions) can readily be sprayed from the Pilot Power Electric Spray guns.
4. Clean paint is essential to trouble-free service, and ensures a mirror-smooth finish. If you are in doubt about the condition of the paint, filter it through a fine mesh strainer.

## Sprayability

Generally, the spraying material is supplied with too high viscosity (consistency = viscosity) and, thereof, has to be thinned up for spraying. Most of the paints cannot be primed and sprayed from bulk containers and, moreover, you achieve an unsatisfactory spray pattern. In addition to this, paint consumption is too high. The thinning up has to be arranged according to the instructions given by the paint-manufacturer. These are no general guidelines since various types of paints and makes are available having a different dilution degree. In very specific cases the dilution degree has to be inquired with the paint manufacturer

## Nozzle Selector Chart

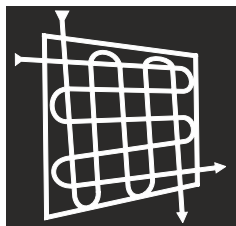
---

### Round Jet Tips

---

- |                 |   |
|-----------------|---|
| 0.3 mm          | - for oils, washes                                |
| 0.4 mm / 0.5 mm | - for thin-flowing enamels                        |
| 0.6 mm / 0.7 mm | - for primers, base-coats, thick-flowing enamels. |
| 0.8 mm          | - general purpose tips                            |
| 1.0 mm / 1.2 mm | - water-thinned paint                             |
-

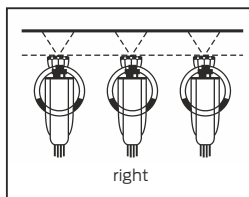
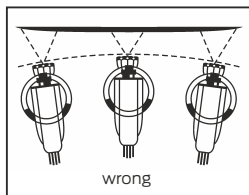
## How to use



When spraying, keep spray gun in horizontal position or hold spray gun level with the nozzle pointing slightly downwards or slightly upwards.

"Crosswise spraying" is the best way of covering a flat surface,

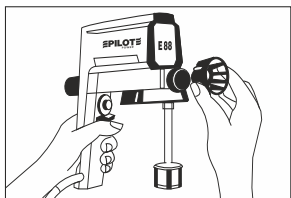
using a round jet nozzle. Its important to start off outside the area to be covered and avoid any break during spraying. Move the gun with a steady motion. Slowing down or speeding up will cause irregular spray pattern, spots, runs, irregular finish, ripple effects, etc. Never move the spray gun by flexing your wrist. Instead, swing your whole arm to maintain uniform spacing between spray gun and surface.



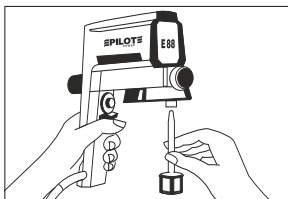
## Caution

- Pilot Power Electric Spray guns should be used only for spraying paints and solvents having a flame point of 21°C/70°F or above and used without additional heating.
- Never use in premises subject to regulations on explosive hazards
- Wherever possible, spraying should be done in the open.
- When spraying in enclosed premises, provide adequate ventilation. Keep all open flames out of the spraying areas and do not smoke to avoid explosive hazards.
- As the spraying medium is expelled from the tip at high pressure, never touch the nozzle while spraying. Do not direct the gun against yourself or any other person.
- Always disconnect the plug from the socket before carrying out any work on the gun.
- Paint strippers and alkalies may cause corrosion damage and must not be sprayed from the gun.

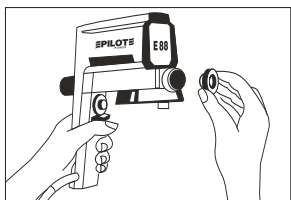
## Removing & replacing the pump



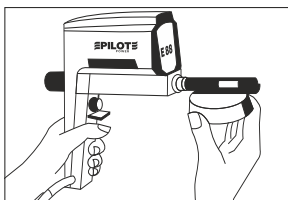
1



2



3



4

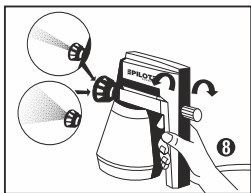
Proceed in the sequence shown in the illustrations

1. Loosen the nozzle, take-off valve, unscrew the container.
2. Take off the suction tube.
3. Loosen the locking screw.
4. Remove the complete pump.

**Repeat the process in reverse.**

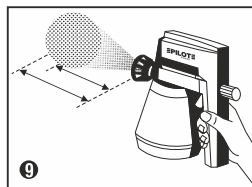
4. Replace the pump.
3. Firmly tighten the locking screw.
2. Insert suction tube, replace container.
1. Insert valve secure the nozzle.

## Setting, atomization and delivery



- The adjoining illustration (8) shows how to operate the delivery control knob.
- Turn clockwise to set a narrow jet and low output.
- Turn counterclockwise to set a full jet and high output.

- Important: Altering the jet also means changing the distance to the sprayed surface (fig.9).
- Broad Jet = about 23-35 cm (10-14 in) distance
- Narrow Jet = about 15-25 cm (6-10 in) distance



9

# Handling

- Thin paint according to instructions given earlier of this manual.
- Pour paint into container and screw it on to the spray gun.
- Point at surface to be painted.

## Note

If the appliance only gives-off a low hum please stop it immediately to prevent the drive from burning out.

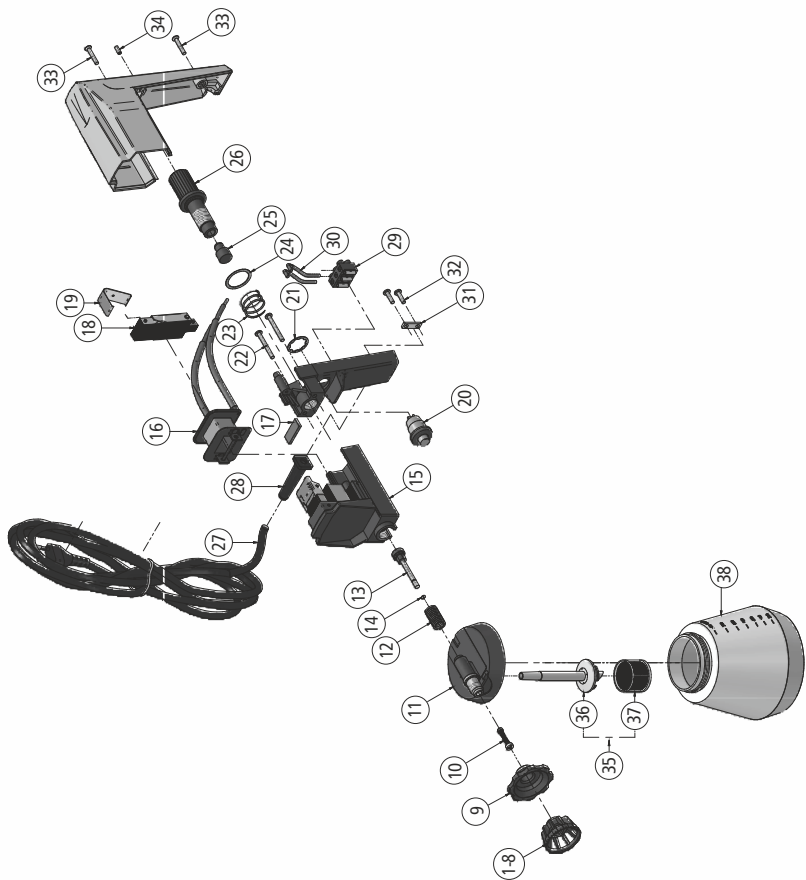
Dismantle the pump and immerse all the parts in a suitable thinner. After a few minutes of soaking clean the parts by means of a brush until the last traces of encrusted paint have been removed.

## Spare parts list

Ref. No.	Description	Ref. No.	Description
1	Nozzle Complete	17	Cover
2	Locking Screw	18	Threaded Stud
3	Valve Complete	19	Cover Screw
4	Pump Housing Complete	20	Switch ring
5	Piston Spring	21	Switch lead
6	Piston Complete	22	Anchorage Screw
7	Drive Housing Complete	23	Cable anchorage
8	Damper Part	24	Switch
9	Coil 240V-50Hz	25	Cable with plug
10	Vibrating Armature Complete	26	Grommet
11	Leaf spring	27	Terminal block
12	Handle	28	Suction tube
13	Handle Screw	29	Filter
14	Control Knob spring	30	Container
15	Buffer	31	Container cover
16	Regulating Screw	32	Repair kit * #

\* This set contains Valve complete, Pump Housing, Piston Spring & Piston Complete. # Accessories





## **Maintenance**

1. Only use suitable thinners for cleaning the spray gun.
2. After having used the spray gun :
  - a) Clean thoroughly the gun with appropriate thinner
  - b) Clean paint container with thinner
  - c) Clean nozzle, suction tube and filter by means of a fine brush, then blow through filter with air.
3. After spraying aqueous solutions flush the gun by spraying clean water followed by a machine oil to prevent erosion.
4. When spraying oil based materials, flush or clean with a compatible material or solvent, and then follow with a light type spindle or machine oil.
5. Spray through spray gun with a machine oil before the gun is stored away.
6. Always keep the Vent hole in pump housing open.

## **Functional disturbances**

The valve (Pos. 3) is to be regarded as the part most subject to wear and tear.

If the gun does not prime though the drive works normally please check the valve cone for possible wear. The valve is easily replaceable.

## **Important:**

In the case of a clogged nozzle or a soiled valve it is normally not necessary to dismantle the complete pump. Only unscrew the nozzle (Pos.1) and thoroughly clean it together with the valve (Pos.3).

Minor repairs can be carried out by yourself. When ordering spares please quote the correct reference numbers as given in the spare parts list at the end of this manual.

For larger repairs, i.e. if electric components are concerned, ask your local distributor.

## **A checklist to ensure trouble-free service**

- Has the spray been thinned as per instructions?
- Has the valve been properly fitted?
- Is the suction tube in the correct front vent?
- Has the locking screw been tightened?
- Has the regulating screw been screwed in too far?
- Can the piston move freely?
- Has the suction filter been cleaned?
- Are the 3 vents in the valve completely clear.



POLISHING FURNITURE

E88  
VARIOUS  
APPLICATIONS



PAINTING FINISHING



## TERMS & CONDITIONS OF WARRANTY

Dear Customer,

It is in your own interest to ensure that the enclosed Warranty Card is filled in & stamped by the dealer at the time of purchase. For warranty conditions, please refer below.

Yours faithfully,

Ishwar S. Manik  
Managing Director



### We guarantee this appliance on the following terms:

We will carry out free repairs or replacement of all parts that are found to be defective owing to design or manufacturing flaws. This warranty does not extend to damage caused by improper assembly or usage, normal wear & tear, negligent handling or servicing, or damage owing to chemicals, electrochemicals, electric agents and particularly abrasive or corrosive materials not recommended by us.

For the warranty to be valid, the card has to be stamped by the dealer as per provision, with the date of purchase and his signature. Also, the appliance has to be returned with the completed warranty card.

We reserve the right to entrust compliance with the warranty to our approved sub-contractor / dealer. If inspection reveals that the damage is not covered by this warranty, repairs will be carried out at the expense of the purchaser.

Manufactured by:

**Manik Radiators Private Limited**

35, Balaji Industrial Estate, Hanuman Nagar, Akurli Village, Kandivali (East),  
Mumbai - 400 101 MH. INDIA • Tel.: +91 22 660 47 000

Email: [info@pilotindia.com](mailto:info@pilotindia.com) • [www.pilotindia.com](http://www.pilotindia.com)